

Front

Back

Synatura™
Syrup

سائناتورا

**SUGAR FREE
NON-DROWSY**

Antitussive & Expectorant

COMPOSITION:

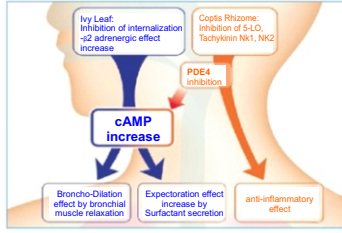
Each ml contains:
Ivy leaf extract 2.625 mg.
Coptis rhizome extract 0.875 mg.

Product Specs.: In-house

DESCRIPTION:

It is innovative herbal medicine with novel composition. It has expectorant, antitussive and anti-inflammatory properties. It is available in suspension syrup form. Ivy leaf and Coptis Rhizome Extract are main active ingredients and exhibit bronchodilator, expectorant and anti-inflammatory properties.

Mechanism of action:



INDICATIONS:

Synatura is used to provide relief of cough and sputum due to:

- Acute respiratory infection
- Chronic inflammatory bronchitis

DOSAGE AND ADMINISTRATION:

DOSAGE GUIDELINE:		خوراک:
Children 2-6 Years	5 ml (one teaspoon) three times a day.	۵ سے ۶ سال تک کے بچوں کے لیے دو بار (یک ٹی اسپون) ان میں تین بار
Children 7-14 Years	10 ml (two teaspoons) three times a day.	۷ سے ۱۴ سال تک کے بچوں کے لیے دو بار (دو ٹی اسپون) ان میں تین بار
Adults Over 15 Years	15 ml (one tablespoon) three times a day.	۱۵ سال سے بڑے بچوں کے لیے دو بار (ایک ٹی اسپون) ان میں تین بار

A measuring cup is provided for accurate measurement of dosage.
خوراک کی صحیح پیمائش کے لیے ٹی اسپون یا کپ فراہم ہے۔
or as prescribed by the Physician.

PRECAUTIONS FOR USE:

Do not administer to the following patients:

- A person who is hypersensitive or allergic to this medication and its components.
- Fructose non-tolerant (containing sweetening substance sorbitol or fructose components).

Be careful with the following patients:

- Gastritis or gastric ulcer
- Severe respiratory diseases such as pneumonia, uncontrolled asthma, viral flu, and tuberculosis

- Malignant tumors, major central nervous system diseases, and other serious metabolic diseases that require medication
- Severe heart failure
- Severe abnormalities in the function of the liver
- Severe diabetes that is not regulated or severe hypertension.
- A patient suffering from diarrhea or hematemesis with fever.

ADVERSE REACTIONS:

Note that the adverse events do not reveal all of the causal relationships with the drugs used in clinical trials, such as vomiting (0.9%), and so forth.

Digestion: Diarrhea (2.5%), indigestion (2.5%), stomach pain (2.5%), vomiting (1.7%), nausea (0.9%)

The nervous system: Headaches (1.7%), dizziness (0.9%), and pharynx neurosis (0.9%)

Respiratory system: sore throat (0.9%), rhinopnea (0.9%), upper respiratory tract pain (0.9%), and voice change (0.9%)

Other abnormal reactions: fever, muscle pain, skin exfoliation, itching, hives, etc.

DRUG INTERACTIONS:

No clinical experience with combination therapy with other drugs, but given the characteristics of the components of this drug, the following are true: interactions with medications may appear, so administer them with care.

- Precipitation containing codeine, dextromethorphan, and other ingredients
- Stomach pain relievers

Pregnancy and lactation:

Due to limited clinical experience of use in pregnant and lactating females, it should not be used without physician advice.

Use in children:

Since there is little clinical use experience for infants less than 24 months old, the medication is administered only when the physician decides it is necessary.

Use in elderly:

Since there is little clinical use experience for older people over the age of 75, it is administered only when the physician decides it is necessary.

INSTRUCTIONS:

- Store below 30°C.
- Protect from heat, sunlight and moisture.
- Keep out of the reach of children.

SHAKE WELL BEFORE USE

PRESENTATION:

Synatura Syrup : Bottle of 120 ml.

ہدایات:
۳۰ درجہ سینٹی گریڈ سے کم درجہ حرارت پر رکھیں۔
گرمی، دھوپ اور نمی سے بچائیں۔
بچوں کی پہنچ سے دور رکھیں۔
استعمال سے پہلے بوتل کو اچھی طرح ہلائیں۔

Manufactured by:
Phytocon International (Pvt.) Ltd.
339-A, Sundar Industrial Estate, Lahore, Pakistan.

Distributed by:
Nesopharm Healthcare (Pvt.) Ltd.
65 Industrial Estate, Kot Lakhpat, Lahore, Pakistan.

FOR FURTHER INFORMATION PLEASE CONTACT:

Manufactured for:
CCL Pharmaceuticals (Pvt.) Ltd.
62 Industrial Estate, Kot Lakhpat, Lahore, Pakistan.